

BOLTED TRAP SCREWS FLEXI FIN BOLTED CAP

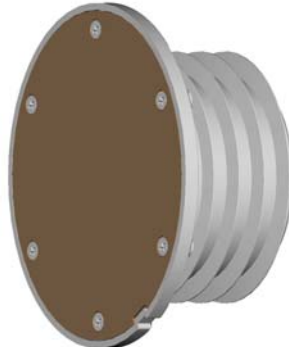


ID	SUIT	FINISH	MEASUREMENT (MM)
DWV - BRASS	DWV	100/90	Brass 24
15290			



ID	SUIT	FINISH	MEASUREMENT (MM)
DWV - CHROME BRASS	DWV	100/90	Chrome 24
15291			

- No solvent welding required
- Remove fin for solvent welding into 90mm pipe
- Quick and easy installation
- 6 x screws fixing system



ID	SUIT	FINISH	MEASUREMENT (MM)
HDPE - BRASS	HDPE	110	Brass 24
15293			

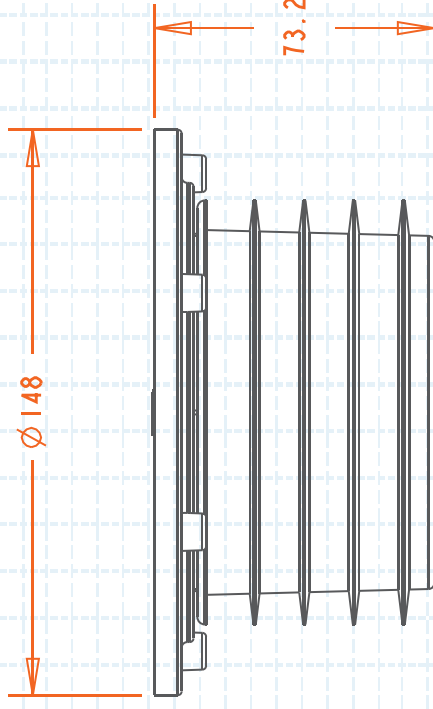


ID	SUIT	FINISH	MEASUREMENT (MM)
HDPE - CHROME BRASS	HDPE	110	Chrome 24
15294			

- No solvent welding required
- Remove fin for solvent welding into 90mm stormwater pipe
- Will push into Earthenware pipe
- 6 x screws fixing system

PRODUCT SPECIFICATIONS

MEASUREMENTS (MM)



Related Products:

- Lids can be purchased separately (Brass Lid ID 11705; Chrome Brass Lid ID 11708)