

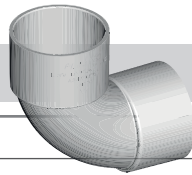
150mm & 225mm

DWV Back to Basics Range

Plastec offers a wide range of basic DWV products for all your everyday plumbing needs.

Please also see additional flyers for details on our smaller 40mm-100mm sizes.

Bends



| ID | INLET | OUTLET | ∠ | |
|-------------------|------------|---------------|----|------------|
| 5 Degrees | | | | |
| 19016 | 150 Socket | 150 Socket | 5 | |
| 19048 | 225 Socket | 225 Socket | 5 | |
| 15 Degrees | | | | |
| 19015 | 150 Socket | 150 Socket | 15 | |
| 19047 | 225 Socket | 225 Socket | 15 | |
| 30 Degrees | | | | |
| 19027 | 150 Socket | 150 Socket | 30 | |
| 45 Degrees | | | | |
| 19040 | 150 Socket | 150 Socket | 45 | |
| 18843 | 150 Socket | 150 Socket | 45 | Heavy Duty |
| 18842 | 150 Socket | 150 Pipe Size | 45 | Heavy Duty |
| 17281 | 225 Socket | 225 Socket | 45 | |
| 88 Degrees | | | | |
| 19014 | 150 Socket | 150 Socket | 88 | |
| 17278 | 225 Socket | 225 Socket | 88 | |

Junctions

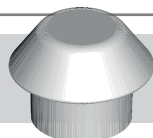
| ID | INLET | OUTLET | ∠ | |
|-------------------|----------------------|------------|----|------------|
| 45 Degrees | | | | |
| 19011 | 150 Socket | 100 Socket | 45 | Reducing |
| 19010 | 150 Socket | 150 Socket | 45 | |
| 19056 | 225 Socket | 100 Socket | 45 | Reducing |
| 19055 | 225 Socket | 150 Socket | 45 | Reducing |
| 18844 | 150 Male/Male/Female | | 45 | Heavy Duty |
| 17294 | 225 Socket | 225 Socket | 45 | |
| 18848 | 225 Male/Male/Female | | 45 | Heavy Duty |
| 88 Degrees | | | | |
| 19013 | 150 Socket | 100 Socket | 88 | Reducing |
| 19012 | 150 Socket | 150 Socket | 88 | |
| 19058 | 225 Socket | 100 Socket | 88 | Reducing |
| 19057 | 225 Socket | 150 Socket | 88 | Reducing |
| 17300 | 225 Socket | 225 Socket | 88 | |

Repair Couplings



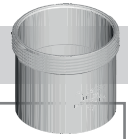
| ID | ∅ | |
|-------|-----|--------|
| 17225 | 150 | Repair |

Vent Cowl



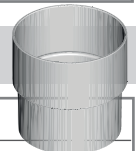
| ID | SUIT |
|----------------|------|
| Covered | |
| 19035 | 150 |

Couplings & Connectors



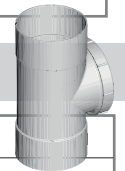
| ID | ∅ | |
|-------|-----|----------|
| 17246 | 150 | Threaded |
| 18156 | 225 | Threaded |

Slab Repair Couplings



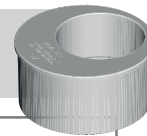
| ID | INLET | OUTLET |
|-------|---------------|------------|
| 17428 | 150 Socket | 150 Spigot |
| 15957 | 150 Pipe Size | 150 Spigot |

Inspection Openings



| ID | ∅ | OUTLET |
|-------|-----|--|
| 19410 | 150 | Female/Female. (19033, Stubby Version) |
| 18837 | 150 | Male/Male Heavy Duty |
| 19043 | 225 | Female/Female |
| 18841 | 225 | Male/Male Heavy Duty |

Reducers



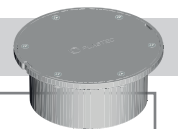
| ID | ∅ |
|---------------------------|-----------|
| Pipe | |
| 19041 | 150 x 100 |
| Socket | |
| 19051 | 150 x 100 |
| 19054 | 225 x 100 |
| 19053 | 225 x 150 |
| Level Invert Taper | |
| 17924 | 150 x 100 |
| 19046 | 225 x 100 |
| 17307 | 225 x 150 |

End Caps



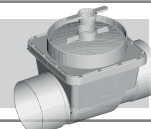
| ID | ∅ |
|-------------------|-----|
| Light Duty | |
| 15033 | 150 |
| Heavy Duty | |
| 14981 | 150 |
| 14982 | 225 |
| 15781 | 300 |
| Threaded | |
| 15002 | 150 |
| 18071 | 225 |

Bolted Trap Screws



| ID | ∅ | Material | Connection |
|-------|-----|--------------|------------|
| 15012 | 150 | Plastic | Socket |
| 16257 | 150 | Plastic | Spigot |
| 18111 | 225 | Plastic | Socket |
| 15013 | 150 | Brass | Socket |
| 16258 | 150 | Brass | Spigot |
| 18105 | 150 | Chrome Brass | Socket |

Reflux Valve & Access.



| ID | ∅ | |
|-------|-----|--------------|
| 17090 | 150 | Reflux Valve |
| 17097 | 150 | Access Cap |

Finishing Collars

| ID | ∅ | OUTLET |
|-------|-----|--------|
| 17430 | 150 | Socket |