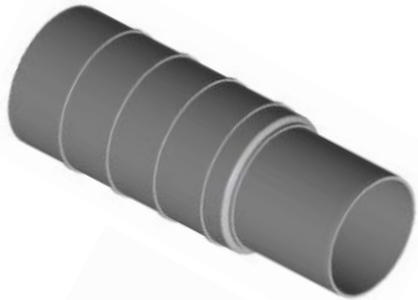




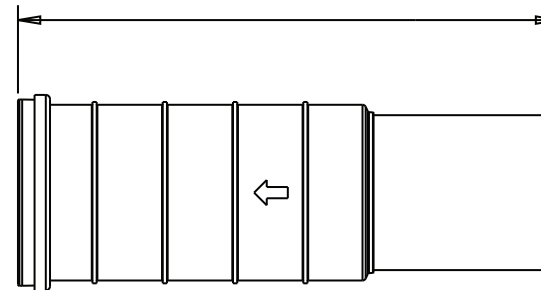
DWV Expander Joints

with 60mm, 100mm, 150mm, 200mm & 300mm Expansion

- Ideal for pipe repair work
- Complete with Internal stop
- Used in conjunction with Swivel Joint for reactive soils
- Water tight seal



| ID | Ø (MM) | INLET | OUTLET | MAX EXPAN. | CTN QTY |
|-------|--------|-----------|--------|------------|---------|
| 15131 | 90 | Pipe size | Socket | 100 | 11 |
| 15130 | 100 | Pipe size | Socket | 150 | 12 |
| 15642 | 150 | Pipe size | Socket | 200 | 6 |

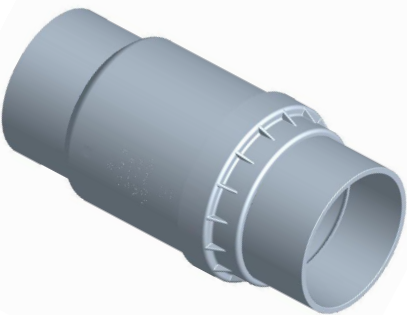


Measurements (mm)

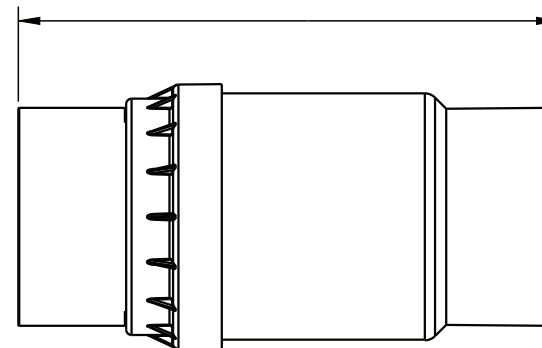
15131
Install position: 258mm
+/- 50mm Expansion/Contraction

15130
Install Position: 384mm
+/- 75mm Expansion/Contraction

15642
Install Position: 180mm
+/- 75mm Expansion/Contraction



| ID | Ø (MM) | INLET | OUTLET | MAX EXPAN. | CTN QTY |
|-------|--------|-----------|-----------|------------|---------|
| 18798 | 100 | Socket | Socket | 60 | 7 |
| 18823 | 225 | Pipe size | Socket | 200 | 2 |
| 20638 | 100 | Socket | Pipe size | 100 | 5 |
| 20640 | 100 | Socket | Socket | 100 | 5 |
| 20642 | 100 | Socket | Spigot | 100 | 5 |



18798
Install position: 189mm
+/- 30mm Expansion/Contraction

18823
Install Position: 498mm
+/- 100mm Expansion/Contraction

20638
Install Position: 293mm
+/- 50mm Expansion/Contraction

20640
Install Position: 299mm
+/- 50mm Expansion/Contraction

20642
Install Position: 296mm
+/- 50mm Expansion/Contraction