



**PLASTEC**  
INNOVATIVE PLUMBING SOLUTIONS

# LARGE BORE RANGE



**Plastec introduces its comprehensive range of large bore products to suit your next project. Made to suit pipe sizes 225, 300 and 375mm this range of fittings are manufactured right here in Australia to the highest standards.**

# LARGE BORE 225, 300 & 375



WATER SERVICES  
ASSOCIATION OF AUSTRALIA  
PA1404

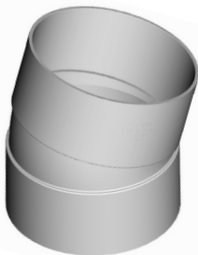


WaterMark  
AS/NZS1260  
23900



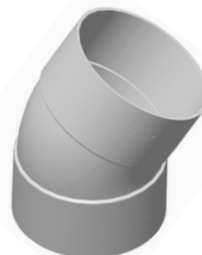
5° FxF Bends

ID	∅	
19048	225	4
19543	300	1
19550	375	1



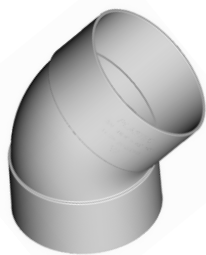
15° FxF Bends

ID	∅	
19047	225	4
19544	300	1
19551	375	1



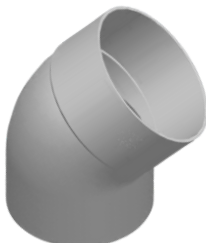
30° FxF Bends

ID	∅	
	225	4
19545	300	1
19551	375	1



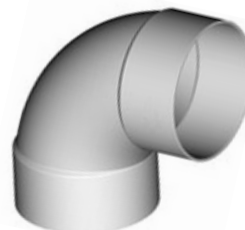
45° FxF Bends

ID	∅	
17281	225	4
19528	300	1
19331	375	1



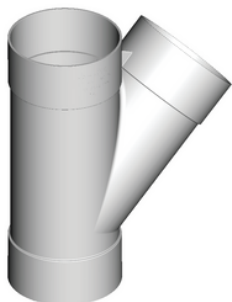
45° MxF Bends

ID	∅	
19631	225	4
19632	300	1
	375	1



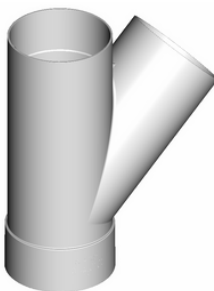
88° FxF Bends

ID	∅	
17278	225	4
19527	300	1
19554	375	1



45° FxF Junction

ID	∅	
17294	225	1
19529	300	1
19555	375	1



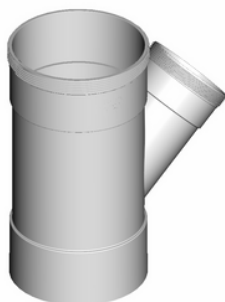
45° MxF Junction

ID	∅	
18848	225	2
	300	
	375	



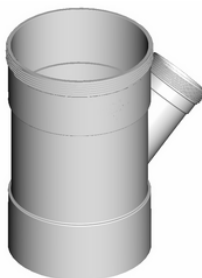
45° FxF Reducing Junction

ID	∅	
19547	300 x 225	1
19557	375 x 225	1



45° FxF Reducing Junction

ID	∅	
19055	225 x 150	1
19530	300 x 150	1



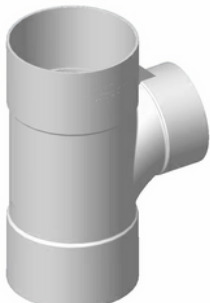
45° FxF Reducing Junction

ID	∅	
19056	225 x 100	1
19531	300 x 100	1



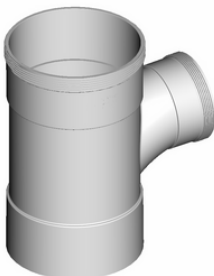
88° FxF Junction

ID	∅	
17300	225	1
19549	300	1
19556	375	1



88° FxF Reducing Junction

ID	∅	
19633	300 x 225	1



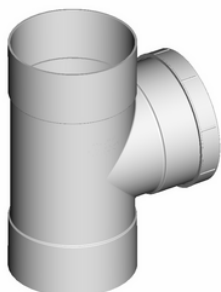
88° FxF Reducing Junction

ID	∅	
19057	225 x 150	1
19548	300 x 150	



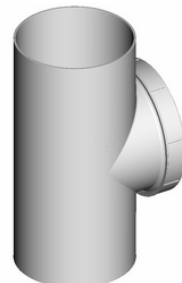
88° FxF Reducing Junction

ID	∅	
19058	225 x 100	1
19634	300 x 100	1



Inspection Opening

ID	∅	
19043	225	1

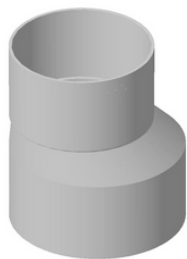


Inspection Opening - Stubby

ID	∅	
18841	225	1

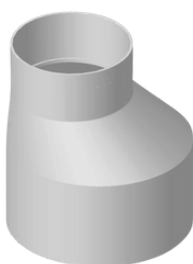


# LARGE BORE 225, 300 & 375



LIT

ID	Ø	⊠
19558	375 x 300	1



LIT

ID	Ø	⊠
19637	375 x 225	1



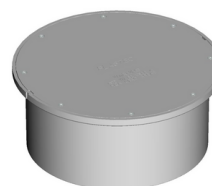
LIT

ID	Ø	⊠
19642	375 x 150	1
19532	300 x 150	1
17307	225 x 150	6



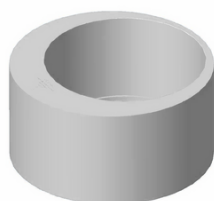
LIT

ID	Ø	⊠
19639	375 x 100	1
19612	300 x 100	1
19046	225 x 100	1



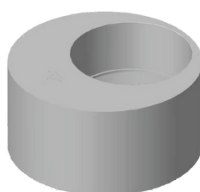
BOLTED TRAP SCREW

ID	Ø	⊠
18111	225	6



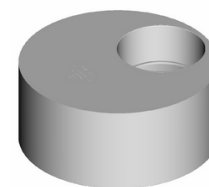
SOCKET REDUCERS

ID	Ø	⊠
19640	375 x 300	1



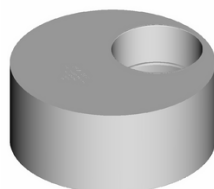
SOCKET REDUCERS

ID	Ø	⊠
19641	375 x 225	1
19521	300 x 225	1



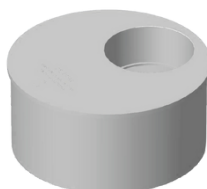
SOCKET REDUCERS

ID	Ø	⊠
19642	375 x 150	1
19501	300 x 150	1
19053	225 x 150	1



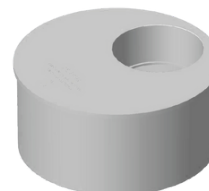
SOCKET REDUCERS

ID	Ø	⊠
19643	375 x 100	1
19592	300 x 100	1
19054	225 x 100	8



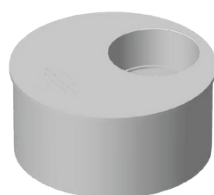
PIPE REDUCERS

ID	Ø	⊠
19521	300 x 225	1



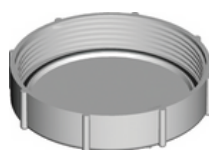
PIPE REDUCERS

ID	Ø	⊠
19520	225 x 150	8



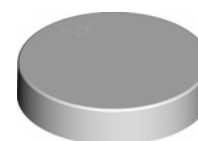
PIPE REDUCERS

D	Ø	⊠
19523	300 x 100	1
19519	225 x 100	8



THREADED CAP

ID	Ø	⊠
18071	225	14



HEAVY DUTY END CAP

ID	Ø	⊠
14982	225	18
15781	300	8



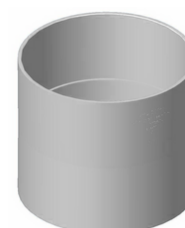
THREADED CAP & COUPLING

ID	Ø	⊠
18738	225	1



THREADED COUPLING

ID	Ø	⊠
18156	225	4



STRAIGHT COUPLING

D	Ø	⊠
19602	225	6
19526	300	1
19559	375	1