



PLASTEC

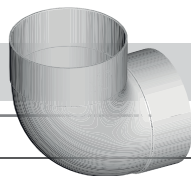
# Stormwater 150mm+

Back to Basics Range

Plastec offers a wide range of Stormwater products for all your everyday plumbing needs.

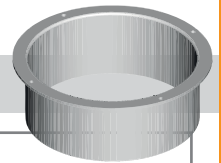
This flyer features our larger 150mm options, however please contact Plastec for information regarding other available sizes.

## Bends



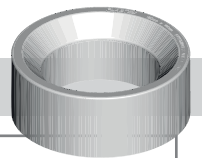
| ID                | INLET      | OUTLET     | $\angle$ |
|-------------------|------------|------------|----------|
| <b>5 Degrees</b>  |            |            |          |
| 19032             | 150 Socket | 150 Socket | 5        |
| <b>15 Degrees</b> |            |            |          |
| 19031             | 150 Socket | 150 Socket | 15       |
| <b>30 Degrees</b> |            |            |          |
| 19030             | 150 Socket | 150 Socket | 30       |
| <b>45 Degrees</b> |            |            |          |
| 19029             | 150 Socket | 150 Socket | 45       |
| <b>85 Degrees</b> |            |            |          |
| 19028             | 150 Socket | 150 Socket | 88       |

## Downpipe Drops



| ID    | $\emptyset$ |                   |
|-------|-------------|-------------------|
| 13871 | 150         | Round Drop/Nozzle |

## Reducers



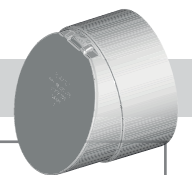
| ID    | $\emptyset$ |                |
|-------|-------------|----------------|
| 17498 | 150 x 100   | Socket Reducer |

## End Caps



| ID    | $\emptyset$ |            |
|-------|-------------|------------|
| 15984 | 150         | Heavy Duty |
| 15985 | 225         | Heavy Duty |
| 15986 | 300         | Heavy Duty |

## Flap Valves



| ID    | $\emptyset$ |           |
|-------|-------------|-----------|
| 17528 | 150         | Top Hinge |
| 19059 | 225         | Top Hinge |